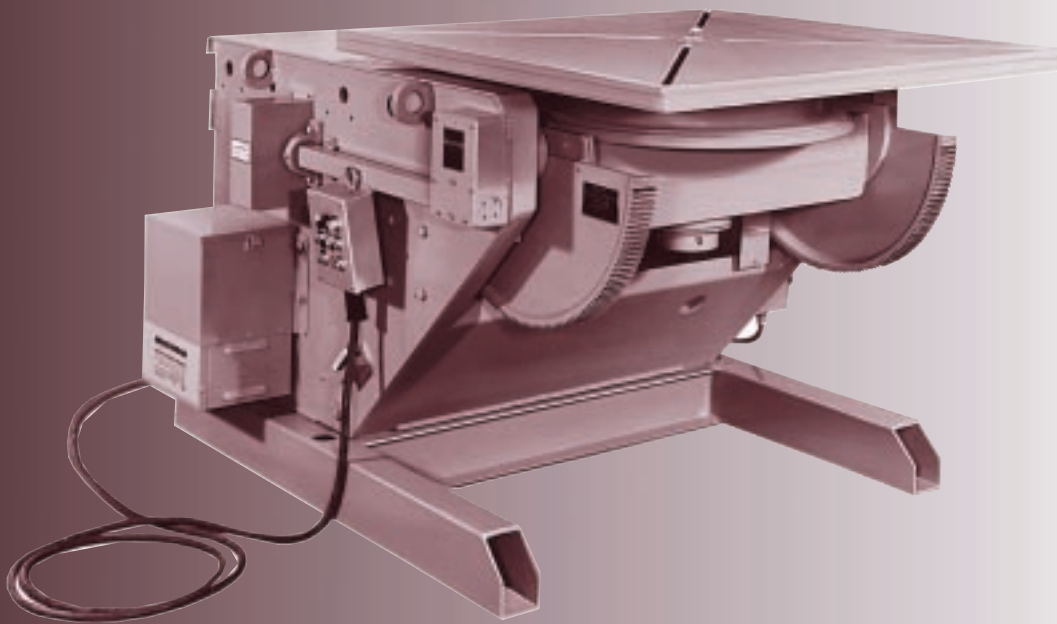

POSITIONER

Series



Gear Driven Positioners

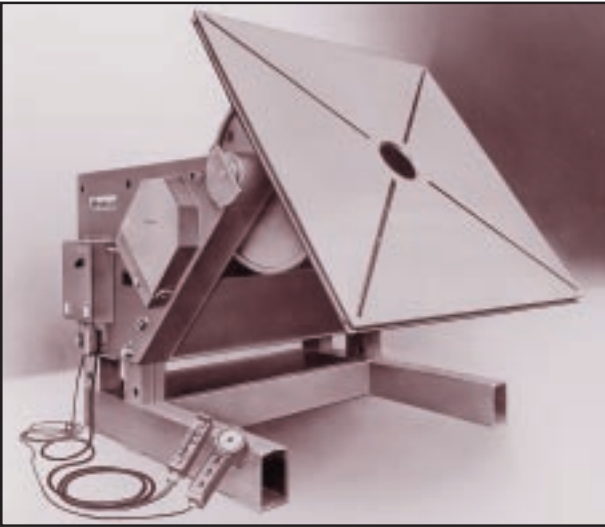


*Maximum Safety
and Convenience*



KOIKE ARONSON, INC.

Gear Driven Positioners



*Precise, Durable
and Positioned for
the Future.*



Maximum safety and convenience

Koike Aronson manufactures a complete line of gear driven positioners which maximize both safety and production.

Our positioners enable better weld seam accessibility creating increased deposition rates. Even less experienced weld operators can safely manipulate our units while concentrating on welding functions. The boxed section design takes up minimal floor space and allows unrestricted movement throughout the work area. Many safety features have been incorporated into the structural, mechanical and electrical components of these positioners to ensure safe, productive operation.

A large selection of optional equipment includes: 4-speed manual shift, back-lash control, variable speed tilt, and optional tables.

*G Model - 90° Forward tilt,
45° Rearward tilt, Hollow spindles,
Fixed Height.*



*HD20 Model shown
completely lowered on its
adjustable height legs.*

Features

- Boxed section design that is stronger and will not distort support gearing when loaded.
- 4-post base has a large column of support that prevents the chassis and workpiece from moving sideways during rotation of unbalanced loads.
- Motors are mounted upright, easy to access, and sealed from dust contamination.
- Limit switches and precision adjustable tilt-stop triggers for accurate tilt setup and prevention of overtravel.
- Ground blocks for positive clamping of cable terminals to assure continuous, non-varying weld circuit conduction.
- 90,000 PSI aluminum-bronze wormgear drives are self-locking to prevent accidental load start-up.
- Heavy duty precision final drive gearing for smooth table rotation with a minimum of lost motion.
- High load capacity tapered roller bearings are preloaded on spindles for guaranteed weld ground conduction.
- Tables have full length slots with nut access in bottom side or edge.

Specifications

Below is a comprehensive capacity chart giving the necessary information you need to select Koike Aronson Gear Driven Positioners. You should select the positioner model based on the greatest torque requirement, either tilt or rotation torque.

Comprehensive Load Capacity Table																	
Models Available HD	G	LB-IN Max. Torque		INH.* O.H.	CG												
		Rotation	Tilt		@ 4"	@ 6"	@ 12"	@ 18"	@ 24"	@ 30"	@ 36"	@ 42"	@ 48"	@ 54"	@ 60"	@ 66"	@ 72"
HD10	—	6000	16500	4.5	1000	1000	1000	730	580	475	400	350	300	—	—	—	—
HD20	—	12000	21000	4.5	2000	2000	1275	930	730	600	520	450	400	360	325	—	—
HD25	—	15000	31875	6.8	3000	2500	1700	1285	1035	875	750	650	580	520	470	430	400
HD30	—	36000	56250	6.8	4400	4400	3000	2270	1830	1530	1300	1100	1000	900	830	760	700
HD45	—	54000	84375	6.8	5000	5000	4500	3400	2750	2300	1975	1720	1530	1380	1250	1150	1100
HD60	—	72000	123000	8.5	—	—	6000	4650	3790	3200	2750	2400	2200	1900	1700	1700	1500
HD100	—	120000	205000	8.5	—	—	10000	7700	6300	5300	4600	4000	3600	3200	3000	2700	2500
HD160	—	192000	336000	9.0	—	—	16000	12400	10000	8600	7400	6600	5900	5300	4800	4400	4000
HD240	—	288000	504000	9.0	—	—	24000	18500	15000	13000	11000	9800	8800	8000	7300	6700	6200
HD400	G400	480000	840000	9.0	—	—	40000	31000	25000	21500	18500	16400	14600	13200	12000	11000	10200
HD500	G500	600000	1050000	8.8	—	—	50000	39000	32000	27000	23400	20600	18500	16700	15200	14000	13000
HD600	G600	720000	1260000	9.0	—	—	60000	46500	38000	32000	28000	24500	22000	20000	18000	16500	15500
HD700	G700	840000	1470000	9.0	—	—	70000	54500	44500	37500	32500	28500	25500	23000	21000	19500	18000
—	G850	1020000	1800000	9.0	—	—	85000	66600	54500	48000	42000	37000	32000	29000	26000	24000	22000
—	G1200	1440000	2880000	12.0	—	—	120000	96000	80000	68600	60000	53400	48000	43600	40000	37000	34200
—	G2200	2640000	5400000	12.5	—	—	220000	177000	148000	127000	111000	100000	89000	81000	74000	69000	64000
—	G3500	2640000	9300000	14.5	—	—	350000	286000	240000	210000	184000	160000	145000	135000	125000	115000	107000
—	G7000	5000000	1860000	14.5	—	—	700000	570000	480000	420000	368000	320000	290000	270000	250000	230000	214000
—	G10000	5000000	3200000	18.0	—	—	1000000	890000	760000	665000	590000	540000	485000	440000	410000	380000	335000

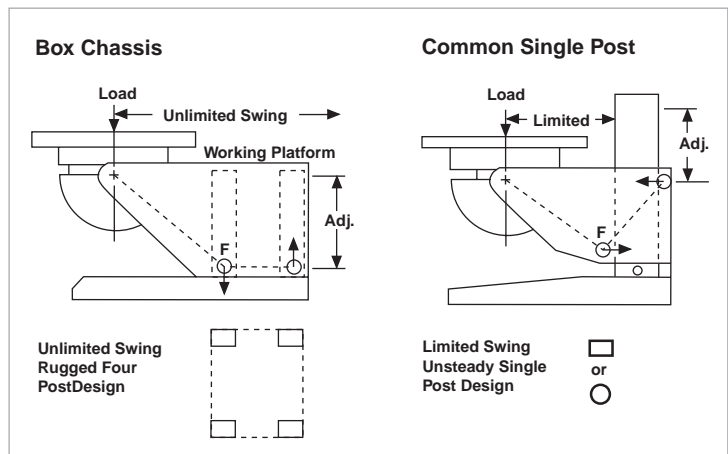
*Inherent Overhang.
Models and Specifications subject to change without notice.
For models of greater than 1 million pound capacity, please consult factory.

Tilt Torque Load

To find your weldments' Tilt Torque Load, add the Inherent Overhang Inches to the Inches distance the weldments' Center-of-Gravity (CG) is from the tabletop surface. This is measured Perpendicular to the tabletop surface. Then multiply this total distance in Inches by the weight of the weldment. Do not exceed the maximum load torque shown in the "tilt" column.

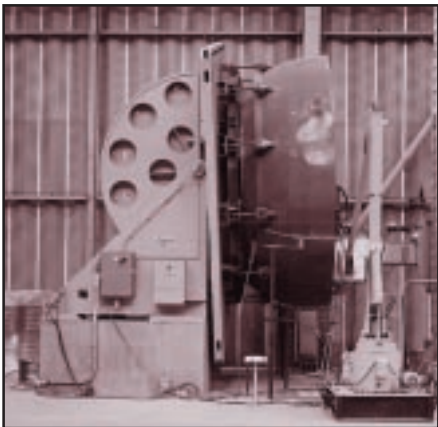
Rotation Torque Load

To find your weldments' Rotation Torque load, multiply the weldment weight in Pounds by the distance in Inches that the CG will be from the center of the table. This measurement is taken Parallel to the table surface. Do not exceed the maximum load torque shown in the "rotation" column.



Unlimited Swing results from Koike Aronson's Box Chassis design. With table flat and height adjusted to minimum, there is nothing projecting above the top of the chassis to limit the diameter of the workpiece.





KOIKE ARONSON, INC.

Web Site Address: www.koike.com

Main Office:

635 W. Main St., Arcade, New York 14009
Phone (585) 492-2400
Fax (585) 457-3517 (585) 492-5209

Southern Regional Office:

1285 North Post Oak, Suite 150, Houston, TX 77055
Phone (713) 682-9645
Fax (713) 957-4852

*Koike Aronson
Positioners
bring things close.*

Sold By:
